

**SURVEY FOR  
NOLENE GAINEY**

BEING A PART OF THE TOWN OF LAVENDER (DEED BOOK MMM PAGE 709)  
ALSO BEING IN LAND LOT 76 4TH DISTRICT  
4TH SECTION FLOYD COUNTY GEORGIA  
FEBRUARY 22, 1999

STATE OF GEORGIA, FLOYD COUNTY  
THE CERTIFYING INSTRUMENT FILED FOR RECORD IN  
THE CLERK'S OFFICE OF FLOYD COUNTY, GEORGIA  
ON THIS 15TH DAY OF FEBRUARY 1999 AT 10:40 AM  
AND RECORDED IN BOOK NO. 26 OF PLATS PAGE 139  
BY CLERK OF COURTS  
MAYNARD CLARK SUPERVISOR COUNTY, FLOYD COUNTY, GEORGIA

SCALE 1" = 100'



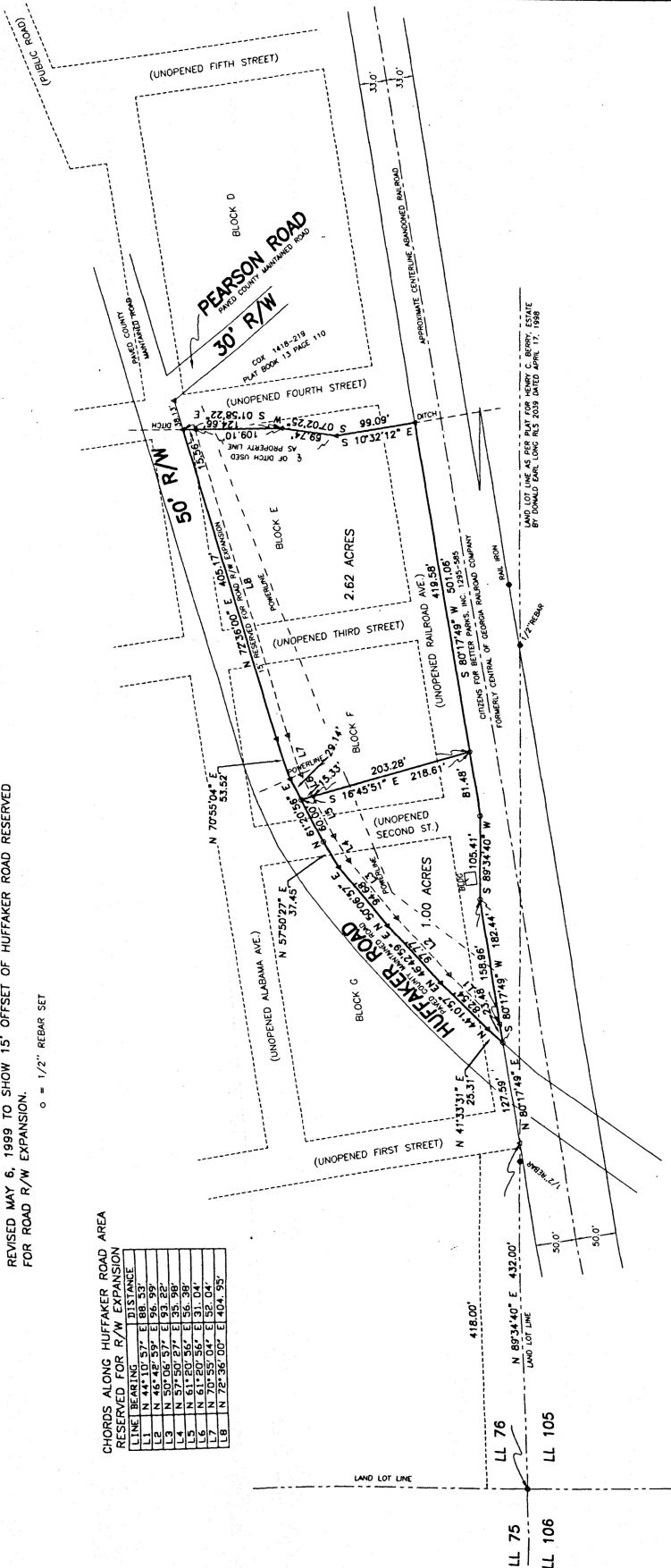
REVISED MARCH 1, 1999 TO SHOW 1.00 ACRE TRACT

REVISED MAY 6, 1999 TO SHOW 15' OFFSET OF HUFFAKER ROAD RESERVED  
FOR ROAD R/W EXPANSION.

o = 1/2" REBAR SET

CHORDS ALONG HUFFAKER ROAD AREA  
RESERVED FOR R/W EXPANSION

LINE	BEARING	DISTANCE
L1	N 44°10'57" E	88.53
L2	N 45°45'59" E	96.32
L3	N 50°56'27" E	135.98
L4	N 51°20'55" E	55.39
L5	N 61°20'55" E	31.04
L6	N 70°59'04" E	46.14
L7	N 72°38'00" E	164.25



**ELBERT H. ANGEL**  
GEORGIA REG. LAND SURVEYOR - 1742  
956 ADAMS ROAD  
CEDARTOWN, GA. 30125  
(770) 748-0419

APPROVED:  
**F.C.H.D.**  
*Carla New*

The field data upon which this plat is based has a closure precision of more than one foot in 10,000 feet and an angular error of no more than one second per angle point and was adjusted using the Compass Rule.  
This plat has been calculated for closure and is found to be accurate within one foot in 10,000 feet.  
Equipment used for measurement:  
Angular: Topcon GTS 3D  
Linear: Topcon GTS 3D  
NOTE:  
This plat is subject to all easements and rights-of-way.  
JOB No. 99-015 / 780-007 / C-99-018A

*OK Phil H. B...*  
7-8-99